

# Enclosed Wire Wound Variable Resistors

## RVF-Type RVS-Type (RoHS-compliant products)

### Introduction

Low-cost power variable resistor with wire core enclosed inside ceramic case. Manufactured in 6 combinations in the 10W-25W capacity range, with direct attachment (S-type) and panel stopper attachment (F-type).

### Features

1. Medium capacity variable resistor ···· Manufactured in a wide range of power from 10W to 25W.
2. Flame proof finish ···· Improved protection from fire and melting during overload at low cost.

### Type descriptions

RVS25	A	20R	120Ω	KK
Style	Slider code	Shaft dimension	Nominal resistance	Resistance tolerance
RVF10S, RVF10L	(*) A only	R: circular	Ω or kΩ indication	KK: ±10%
RVF25		F: flat	(see table below)	
RVS25		S: groove		

10	12	15	4	5	6	7.5
100	150	200	20	30	50	75
1000			250	300	500	750

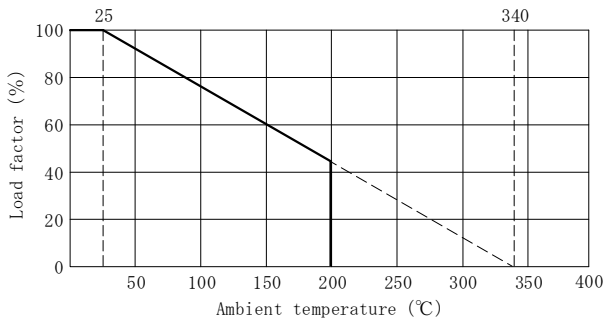
### Characteristic

Test items	Test method	Specified value
Remain resistance		0.2Ω or lower or 0.2% or lower
Insulation resistance	DC 500V megger	100MΩ or higher
Withstanding voltage	RVF10 1000V for 1 min. RVF25 1500V for 1 min.	No breakdown
Rated load	Rated voltage	340°C MAX
Terminal strength	RVF10 15N RVF25 30N	±(1%+0.05Ω)
Vibration	10 - 55 - 10H z for 1 min. 1.5mm in 2 directions for 4 hrs. total	≤15Ω : ±5% >15Ω : ±2%
Moisture resistance	40°C 90-95% 150 hrs DC120V applied	±(10%+0.05Ω)
Load life of rotation	Rated power applied 500 sliding movements	±(5%+0.05Ω)
Load life	Rated power for 500 hrs. 1.5 hrs. ON - 0.5 hrs. OFF	±(5%+0.05Ω)

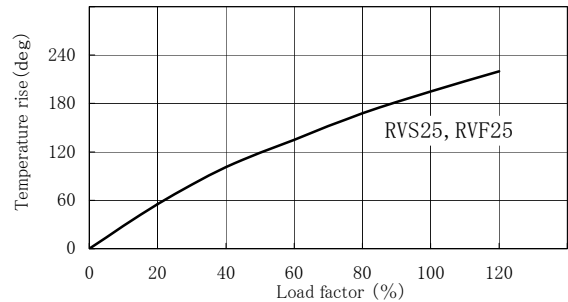
### Slider specification \*All wiring and installation diagrams are shown from the mounting (shaft) surface side

Code	Connection diagram	Mounting diagram
A		

### Load derating curve



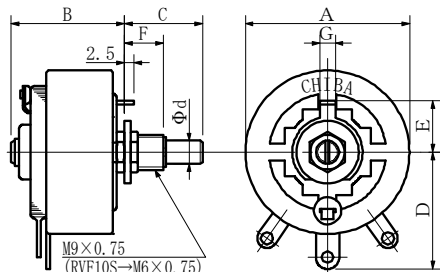
### Temperature rise curve (reference)



### Dimensions & Resistance range

Style	Power (W)		Resist. Range (Ω)	Dimensions (mm)									Mechanical rotation angle (°) ±10	Weight (g)	Low Limit (mm)		
	Rating	Working		A ±1.5	B MAX	C ±1	D	E	F ±1	G ±0.3	d	R			F	S	
RVF10S	10	6	10~500	24	20.5	15	17±1.0	7.0±0.5	6	3	3±0.1	280	10	—	15	15	
RVF10L	10	6	10~500	24	20.5	15	17±1.0	10.0±0.4	6	3	6±0.1	280	10	—	15	15	
RVF25	25	15	4~1K	42	31.0	20	30±1.5	12.7±0.5	10	4	6±1.0	290	75	20	—	—	
RVS25	25	15	4~1K	42	34.0	20	30±1.5	—	—	—	6±0.1	290	75	20	—	—	

RVF type



RVS type

